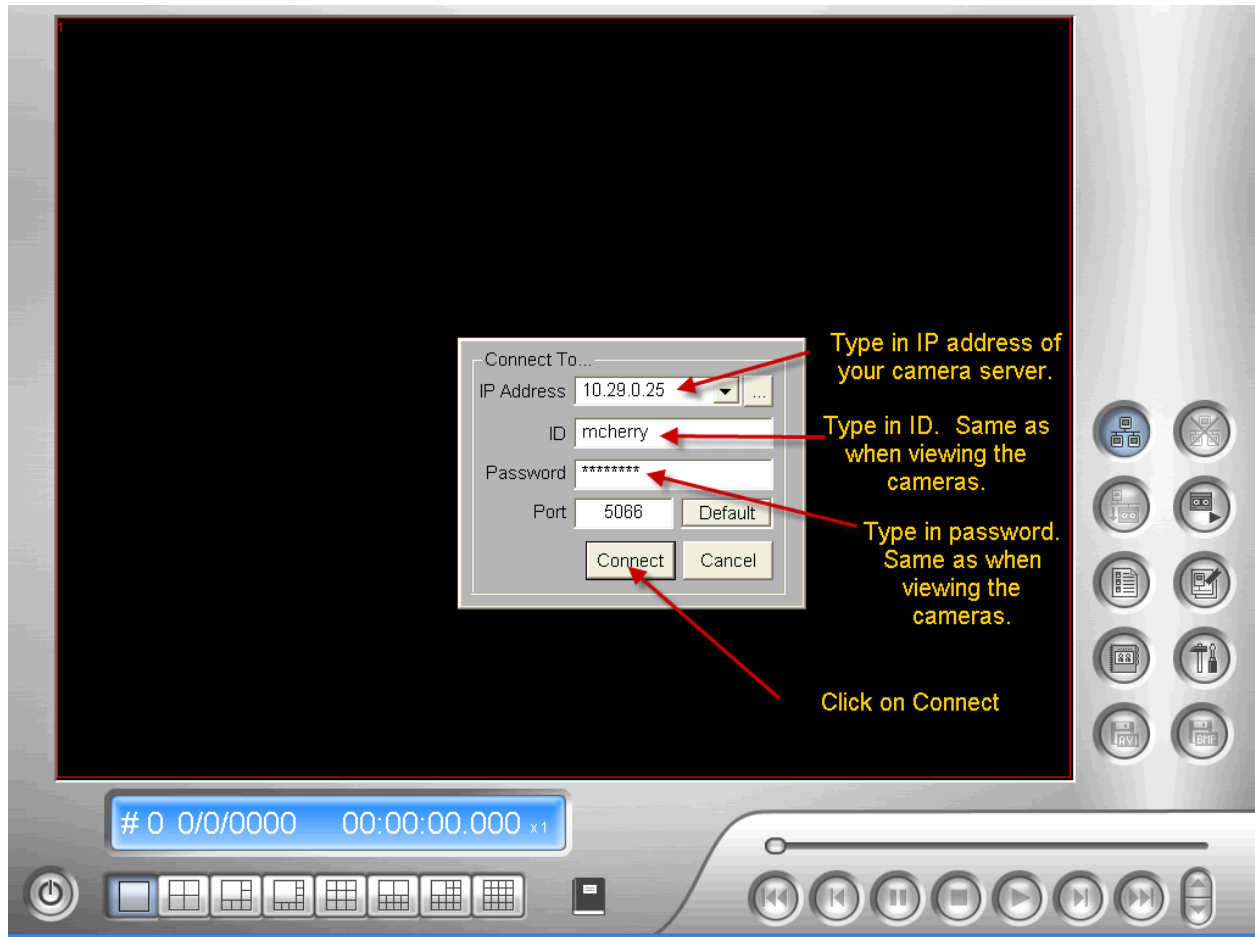


GeoVision System Playback Instructions



After launching Remote Playback Client

Click on the Three Computers Icon

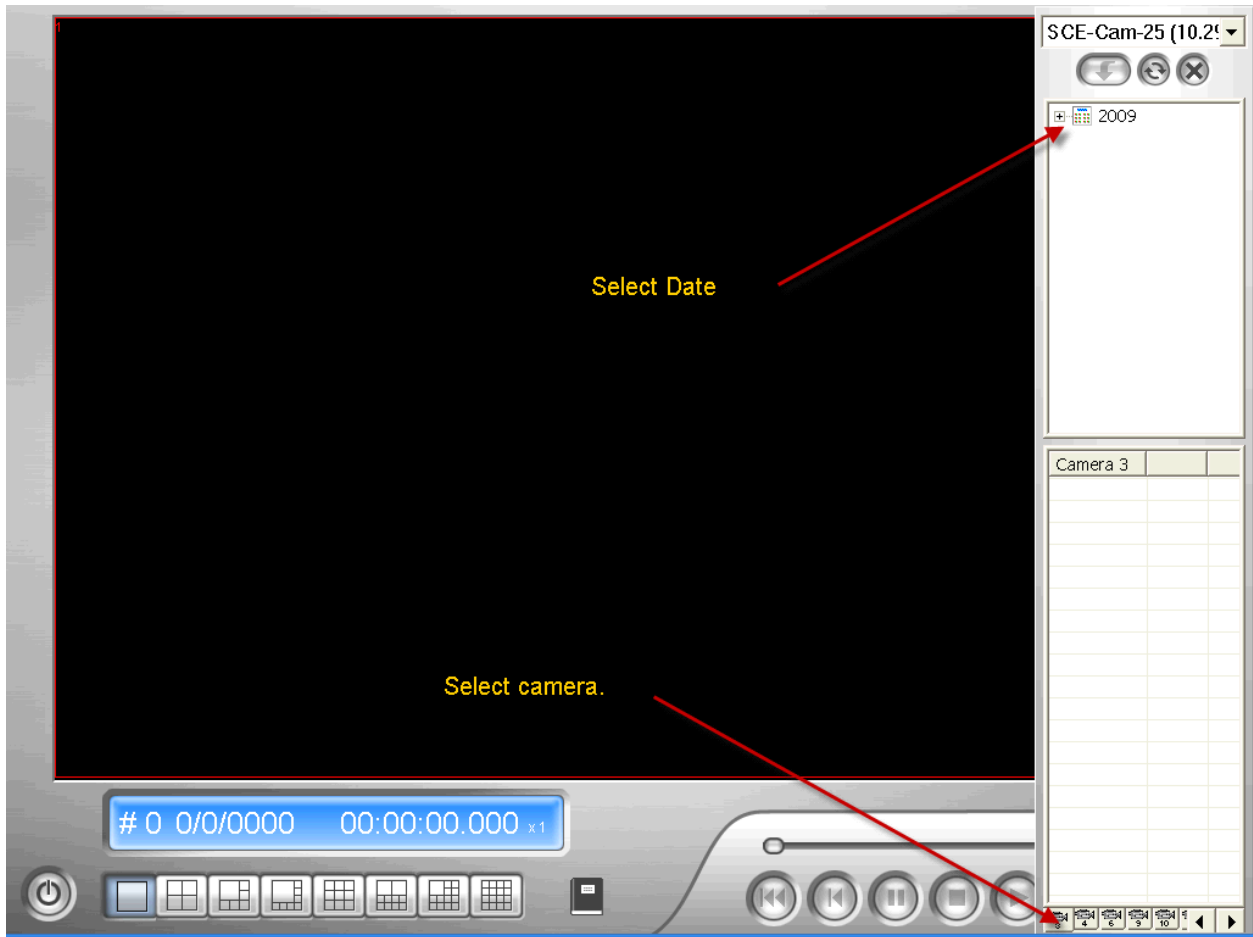


Login Box should now be visible

The IP address of you camera computer may already be displayed. If not type in the IP address or select the appropriate IP address for you camera server. If you do not know your IP address of your camera servers, call or send email to HelpDesk.

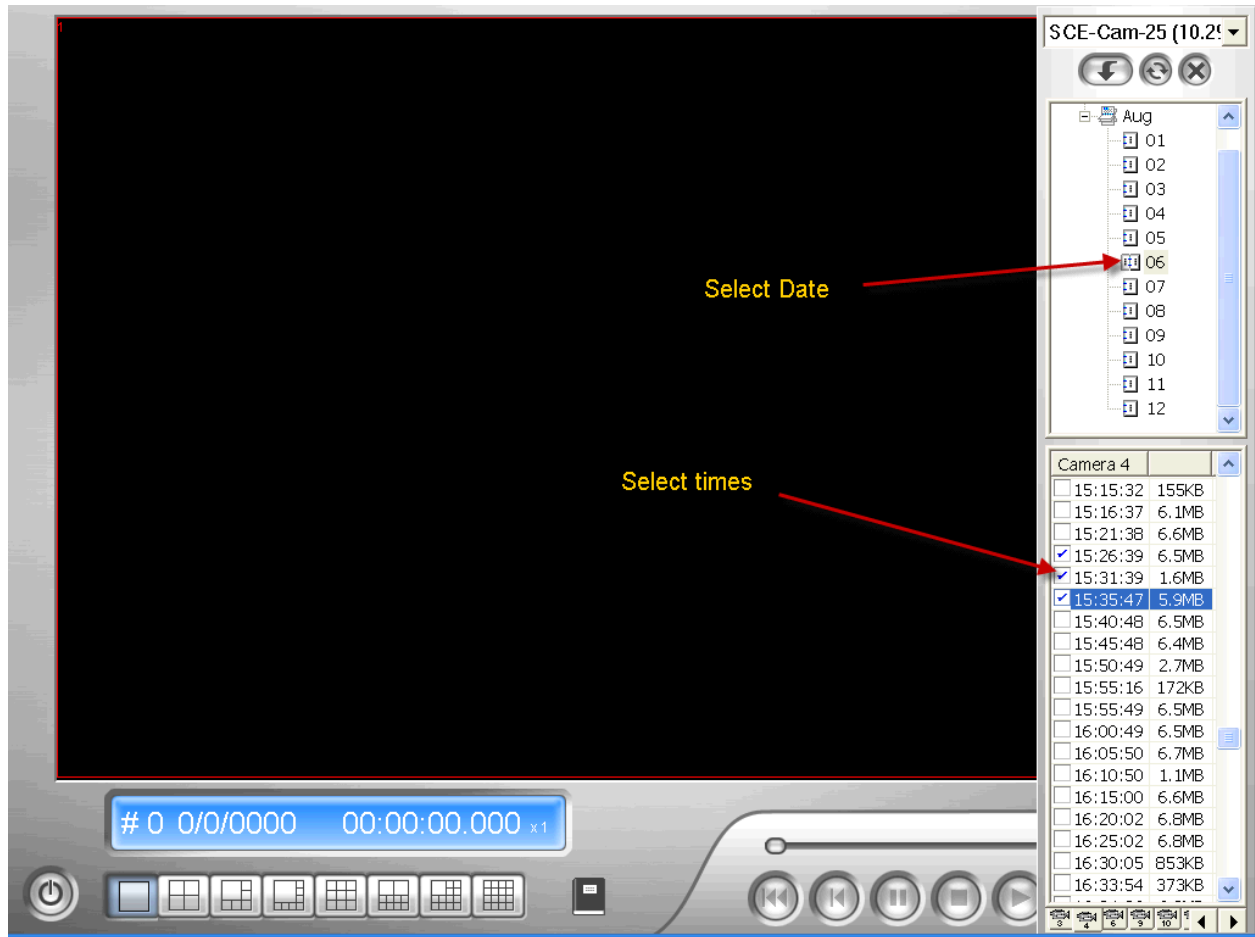
Type in ID and Password. These are the same as your ID and password you use when viewing the cameras.

Click OK.



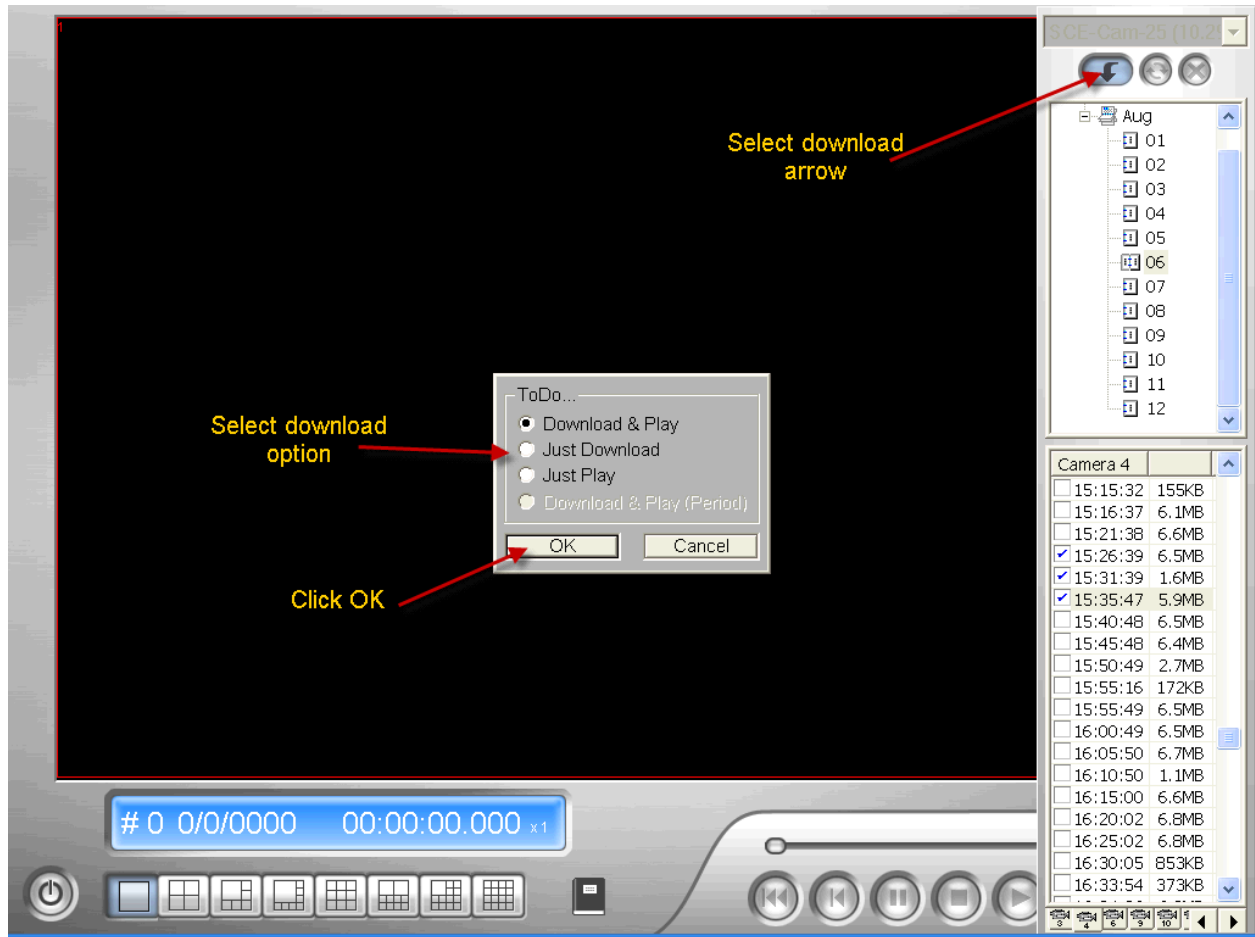
Click on the camera number you wish to retrieve.

Click on the '+' beside the year to expand.



Select the Month and Date

Select the time or times you wish to retrieve.



Click the Download Arrow.

Select Download Option.

Download and Play – Will play the video as it is downloading. You will be asked what directory to save the video too. **DO NOT SELECT YOUR HOME DIRECTORY OR MY DOCUMENTS**. I would suggest creating a folder on your desktop for videos and save all videos in that folder.

Just Download – Will only download your video to a selected folder for saving. You can retrieve video from this folder for later viewing.

Just Play – Will only play the video. The video **IS NOT** saved with this option.

Click OK.



Video will start playing. If more than one time was selected then the "Book" in the bottom middle of the frame will be open and you simply turn the page to get to the next video. Click left page to get back to the previous video.

Buttons on the bottom right work just like a VCR. You can Play, Pause, Advance a frame at a time, etc.