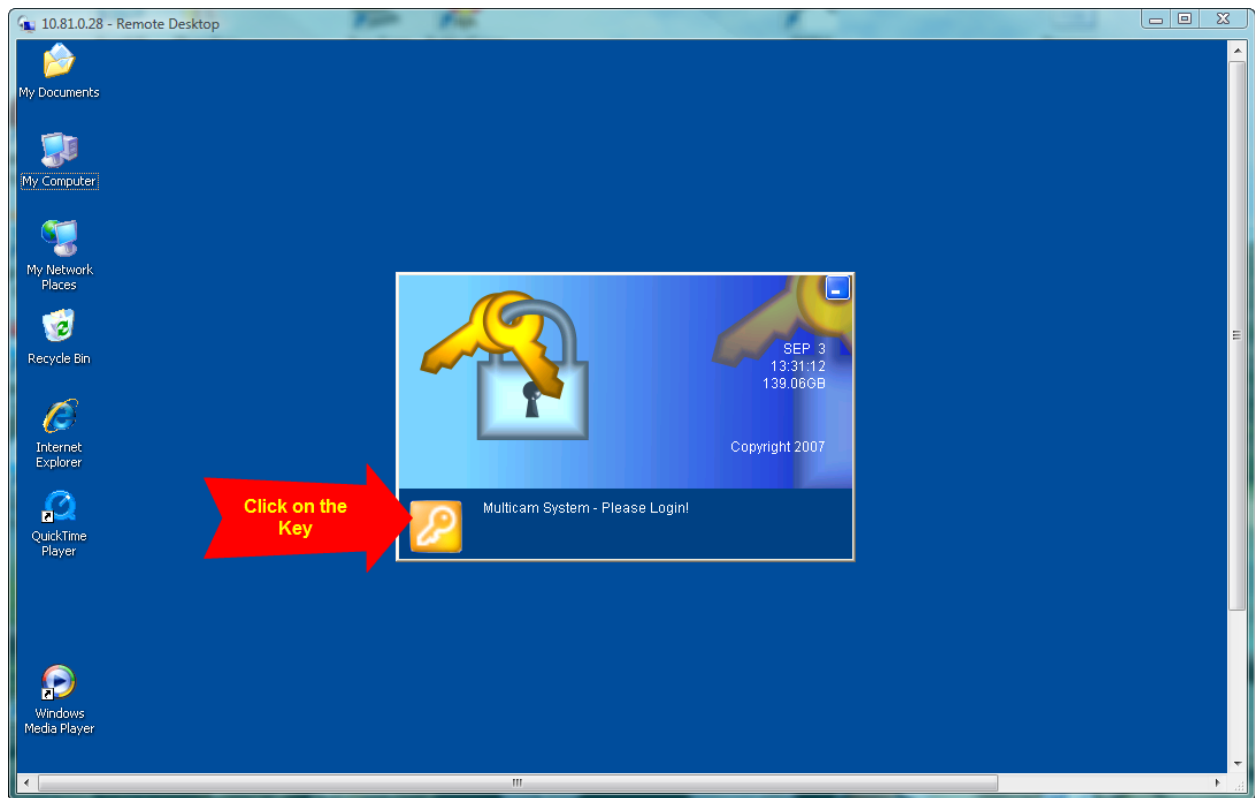


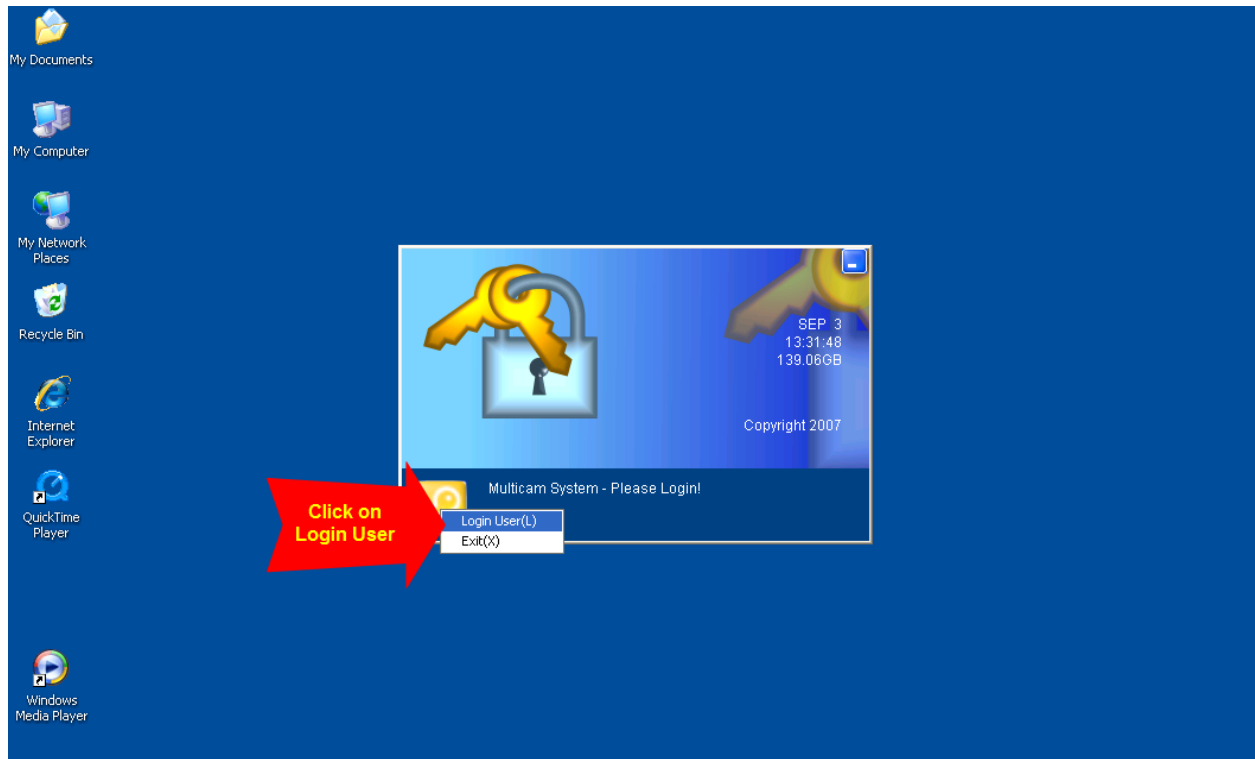
## How Do I Know If My GeoVision Cameras Are Recording?



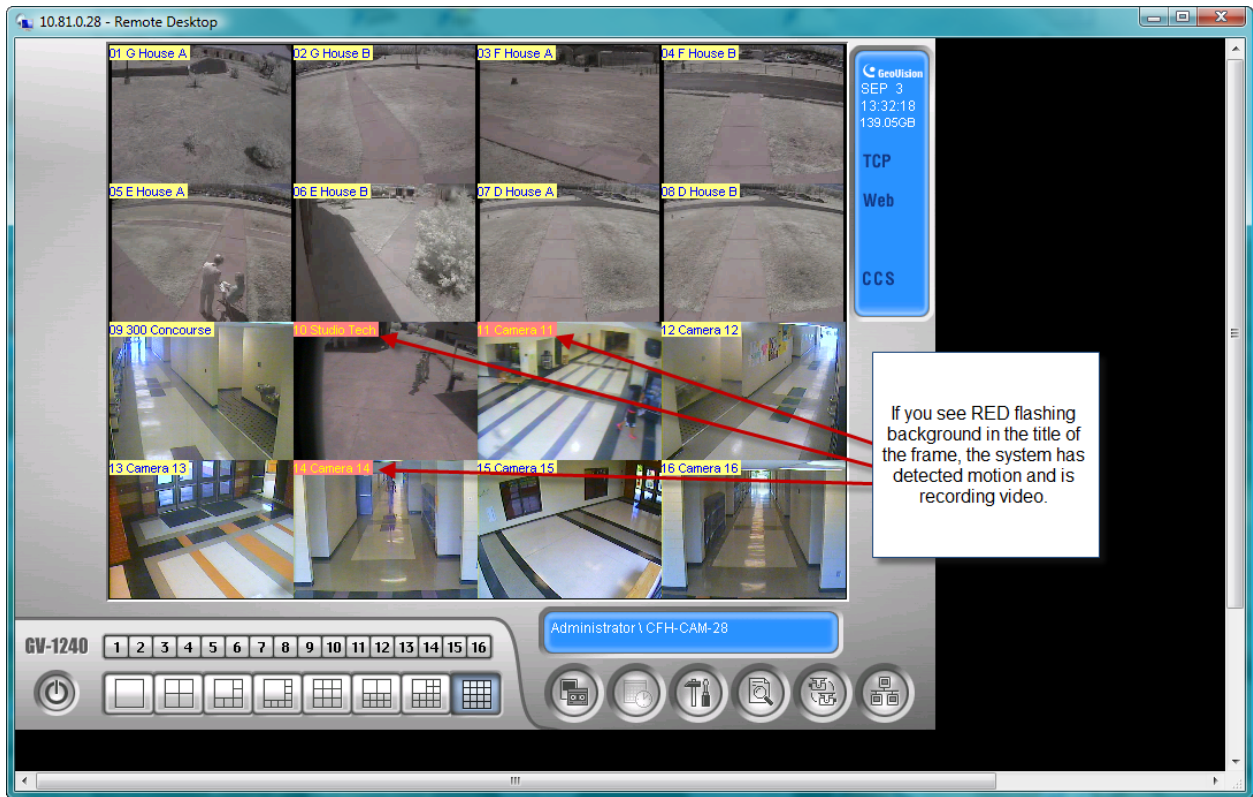
Go to the actual Camera Servers

The screen will be similar to the above picture

Click on the "Key"



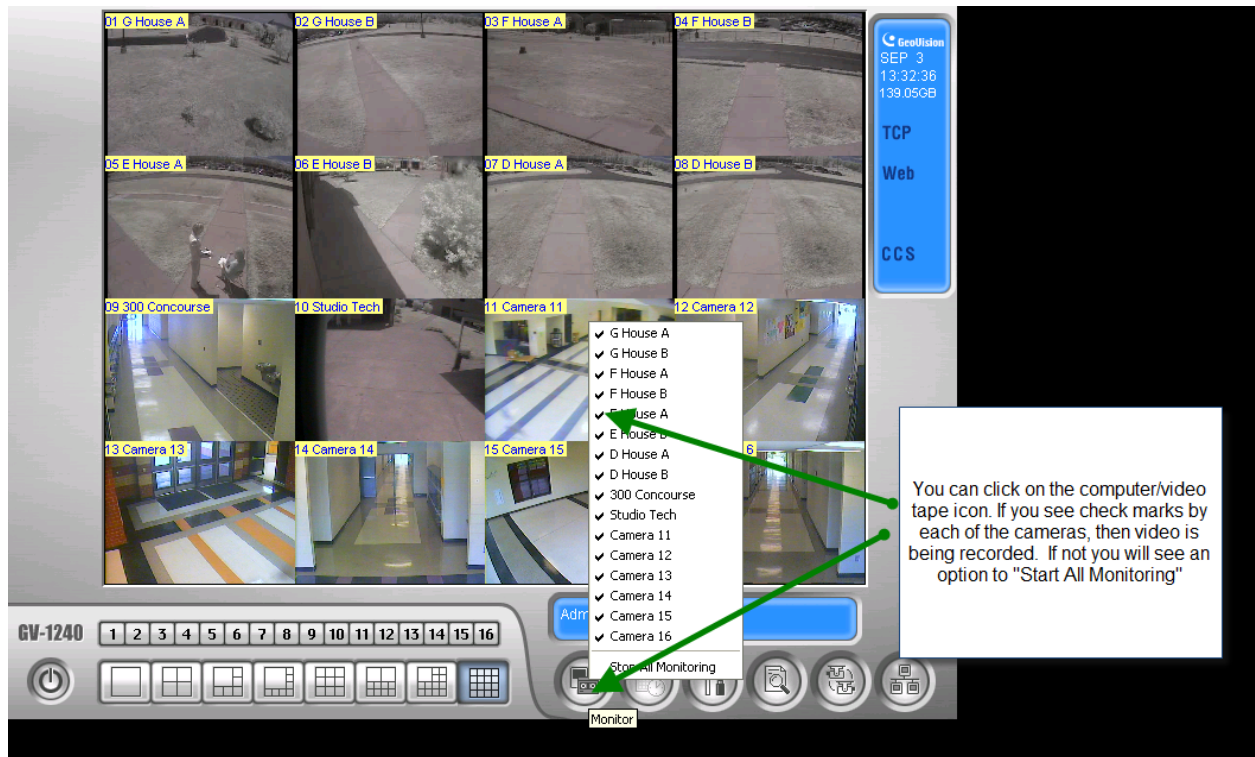
Select **Login User** from the menu.



The school camera images will be displayed as illustrated above.

Look at the frame title and when you see movement in the frame, the frame title should start flashing **RED**.

The flashing **RED** means that video is being recorded.



You can click on the “**Computer/Video Tape**” icon and window will be displayed as illustrated above.

All cameras should have a check mark next to the camera name. This will let you know that the cameras are set to record.

If you do not see a check mark by each camera, then you will be given the option to click on “**Start All Monitoring**”. This will place a check mark beside all cameras names and will enable recording.

If you **MUST** click “**Start All Monitoring**”, repeat the steps above to ensure that each camera name is checked.